

Build Number	Assigned To	Date / Time	Team Lead

INFORMATION

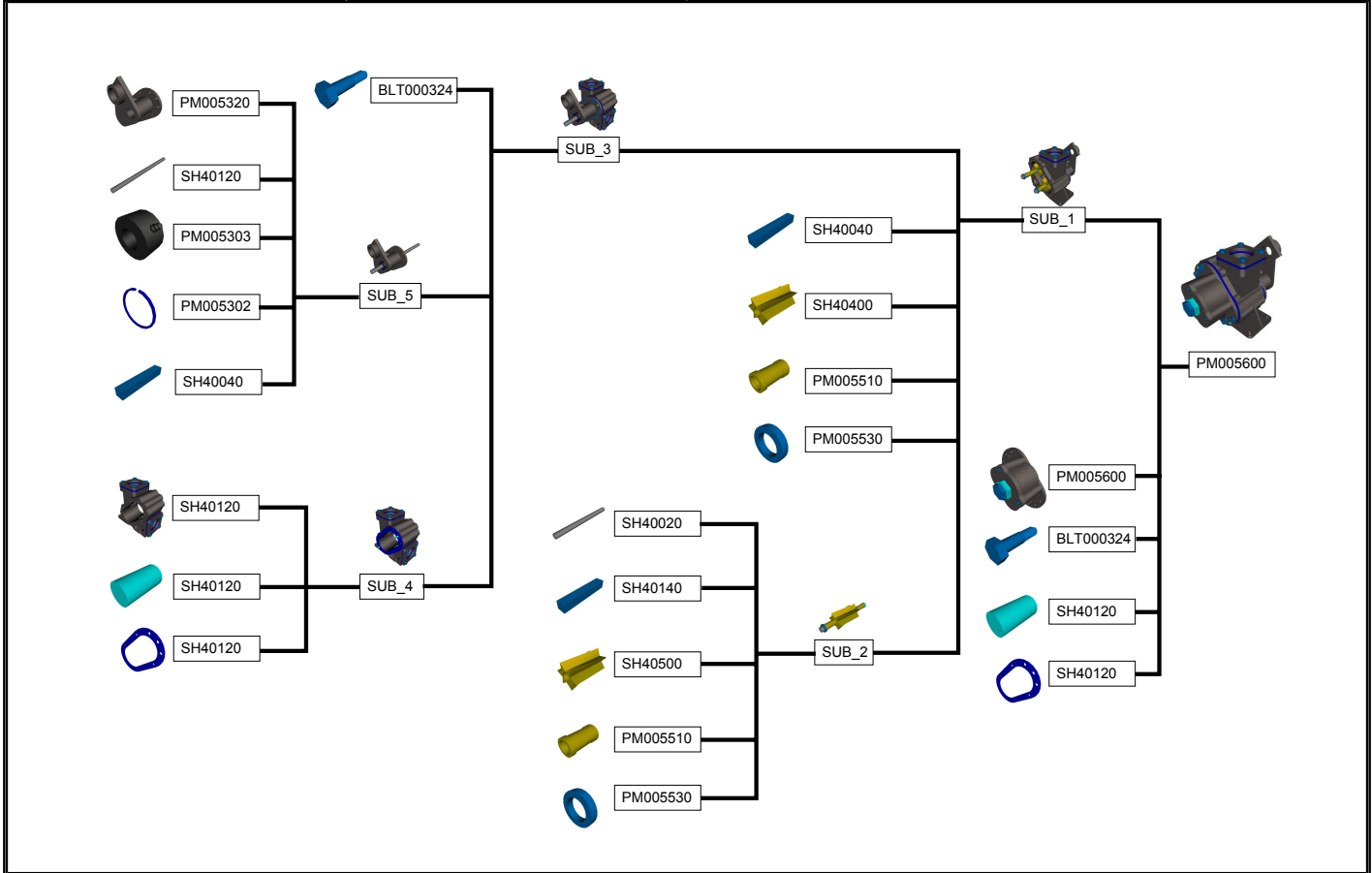
Work Type: Assembly
Role: Line
Expiry Time: 30 Mins
Work Cell: 12
Pre-Job: PMP001234
Post-Job: PMP001236
Work Order: 69C123
Revision: A
Prerequisites: Safety goggles, gloves and boots must be worn at all times. Disconnect the power from the pump before starting this procedure. Drain all fluids from the pump before starting this procedure.

PARTS LIST

Part No.	Description	Quantity	Alt Part No.
PM005302	Back Plate Assy	1	
DP00356	Dowel Pin	2	
PM005330	Gasket, Case	1	
BLT000324	Bolt	8	
PM005302	Retaining ring	1	
PM005303	Ball Bearing Assy	1	
PM005310	Zerk Fitting	1	
PM005350	Casing	1	
BLT000324	Bolt	8	
PM005330	Gasket, Case	1	
DP00356	Dowel Pin	2	
PM005400	Face Plate Assembly, Relief Valve	1	
SH40120	Shaft, Drive	1	
SH40400	Gear, Left Hand	1	
PM005520	Bushing, Short	1	
PM005510	Bushing, Long	1	
PM005530	Washer, Expansion	1	
SH40040	Key	1	
SH40140	Key	1	
SH40500	Gear, Right Hand	1	
SH40020	Shaft, Idler	1	
PM005510	Bushing, Long	2	
PM005530	Washer, Expansion	2	
SH40140	Key	1	
Tool	Torque Wrench		

TASK 1

Task Completed	Completed By	Comments



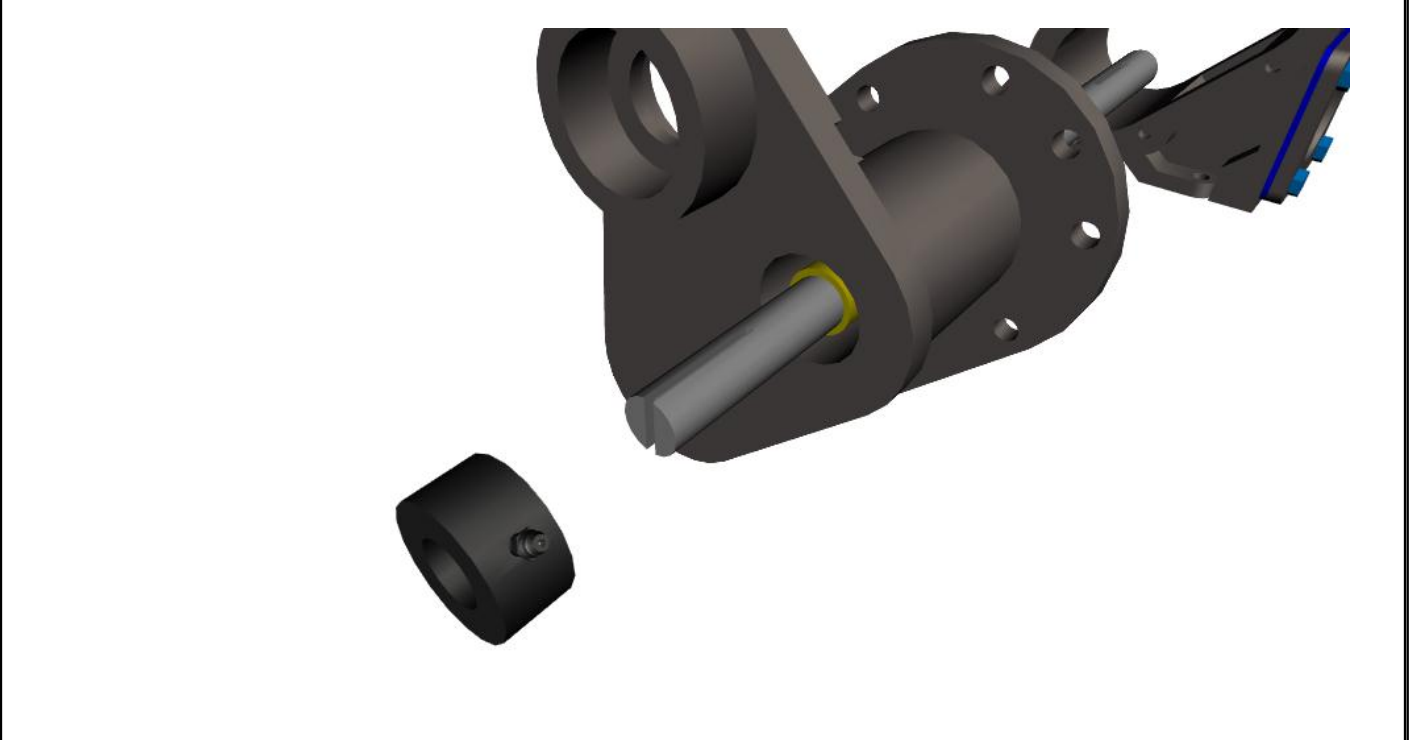
Wipe Drive Shaft with a cloth.



Attach the Drive Shaft to the Backplate Assy.

TASK 2		
Task Completed	Completed By	Comments

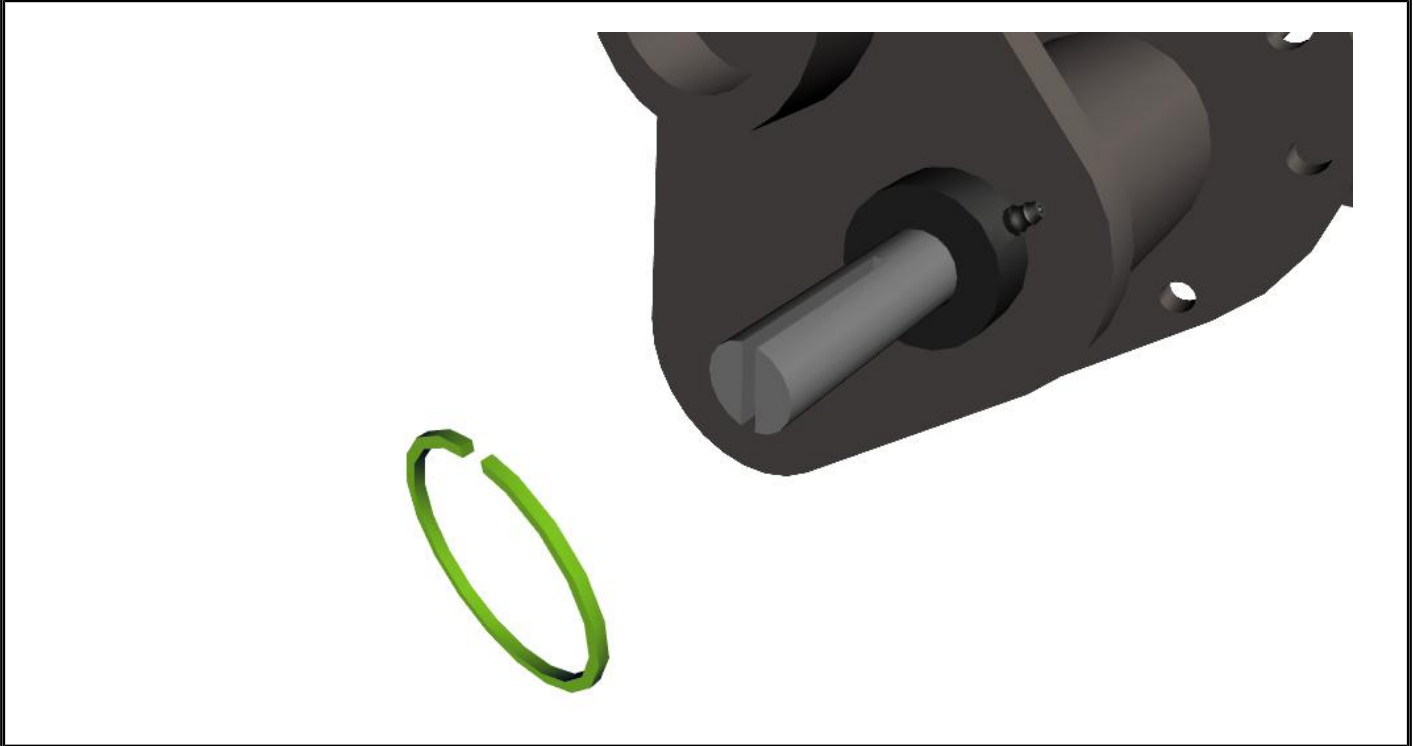
Install the Ball Bearing Assy on the Drive Shaft.



Tighten the Zerk fitting a maximum of 1 turn.

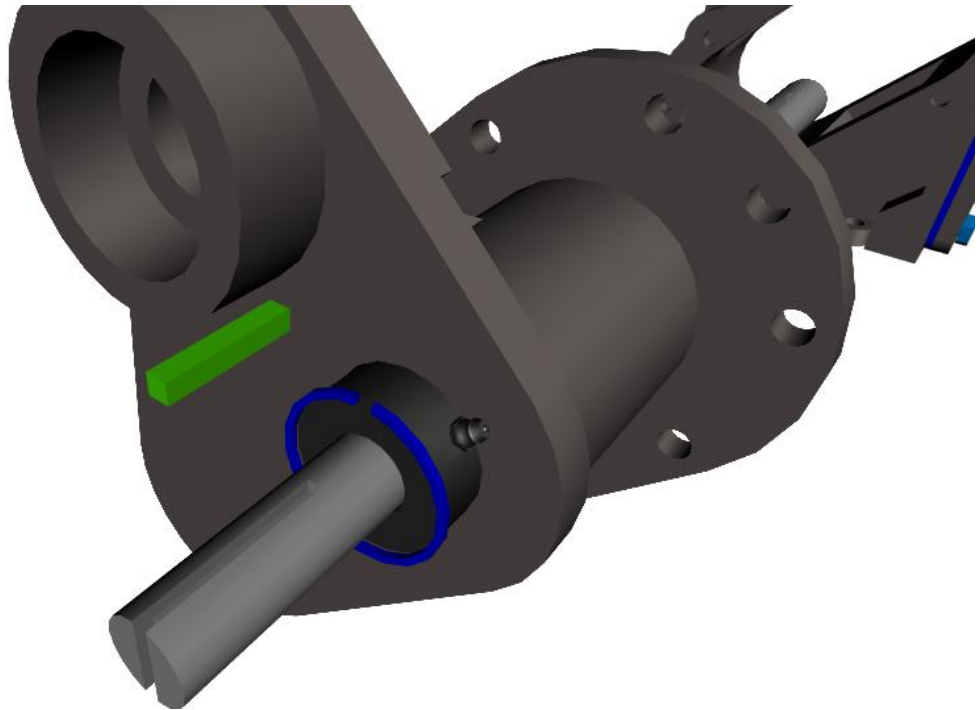
TASK 3		
Task Completed	Completed By	Comments

Install the Retaining Ring on the Ball Bearing Assy.



TASK 4		
Task Completed	Completed By	Comments

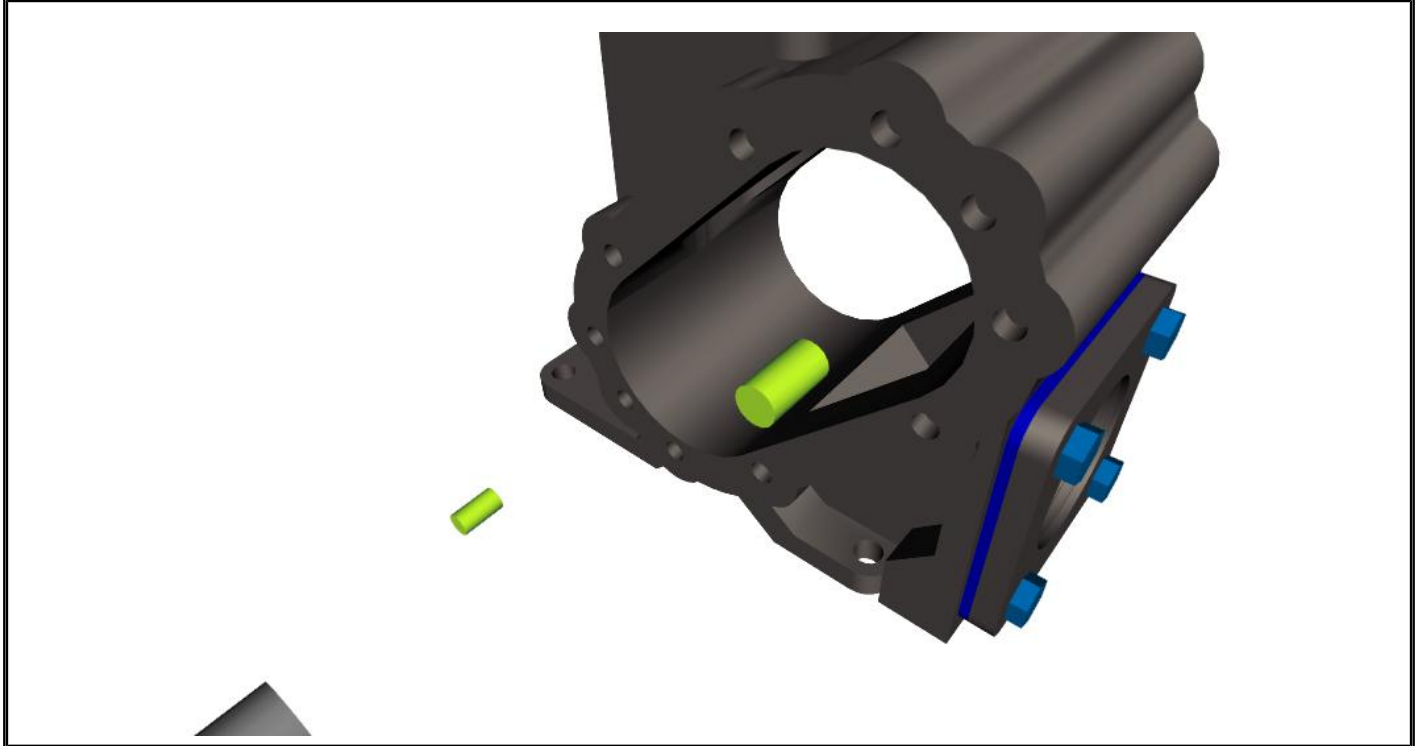
Install the Key on Drive Shaft.



TASK 5

Task Completed	Completed By	Comments

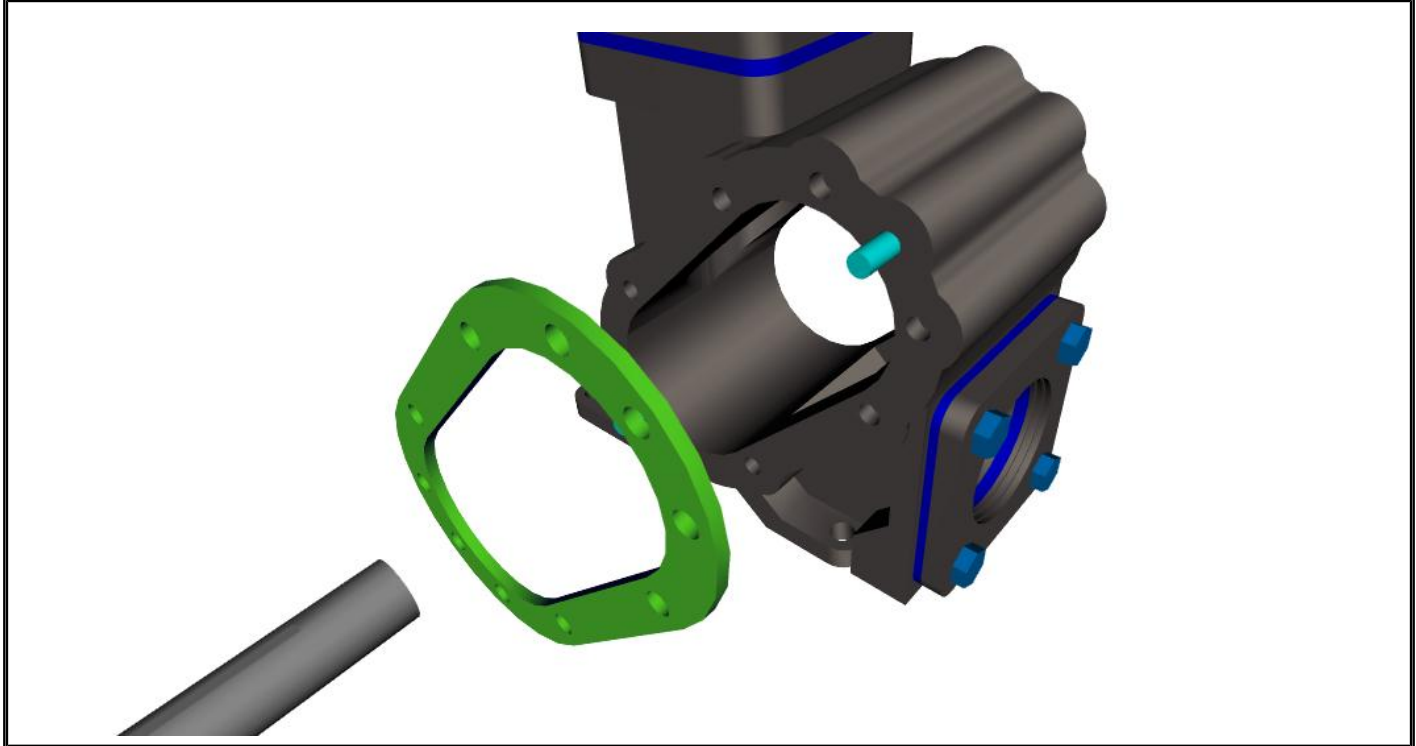
Install the Dowel Pins on the Casing.



TASK 6

Task Completed	Completed By	Comments

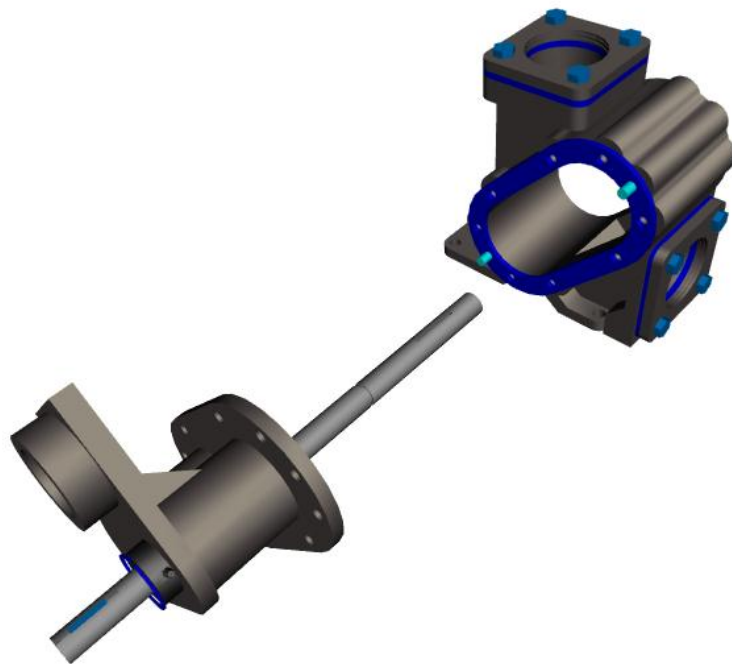
Install the Case Gasket on the Casing.



TASK 7

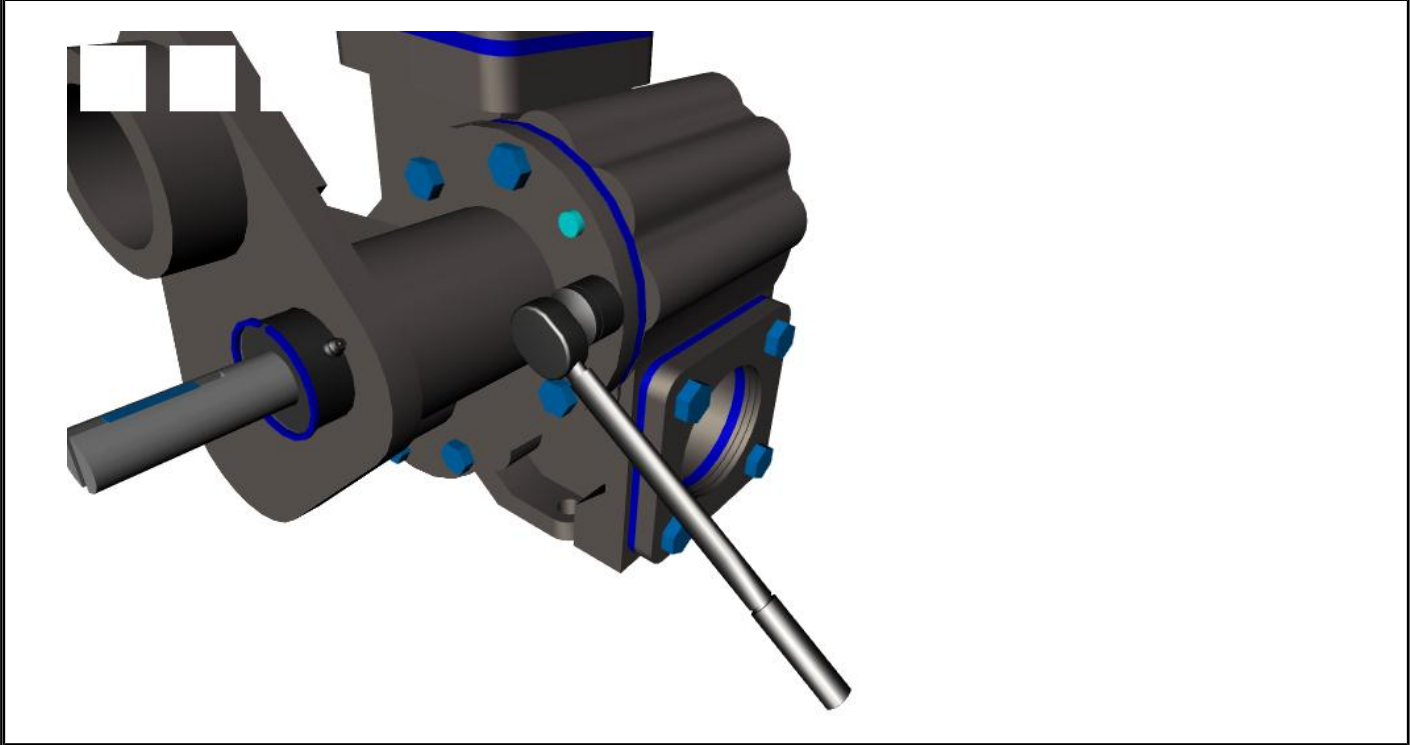
Task Completed	Completed By	Comments

Attach the Back Plate Assy to the Casing.



Install the Bolts on the BackPlate Assy.

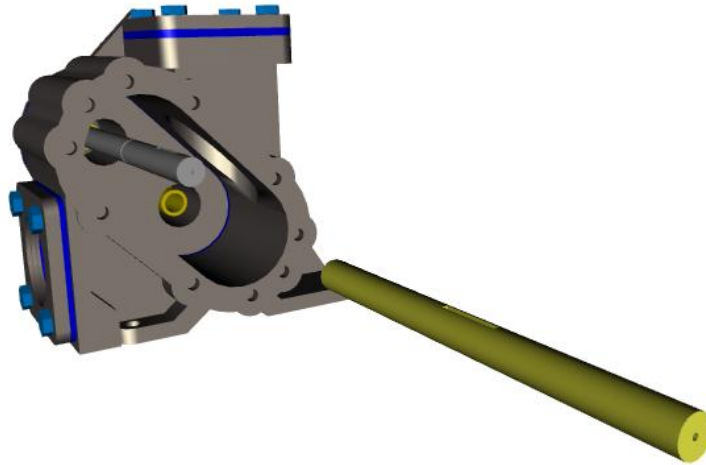
Tighten Bolts using a Torque Wrench.



TASK 8

Task Completed	Completed By	Comments

Install the Idler Shaft.



Install the Key on the Idler Shaft.

Install the Righthand Gear on the Idler Shaft. Inspect for signs of wear on the Gear before installation.

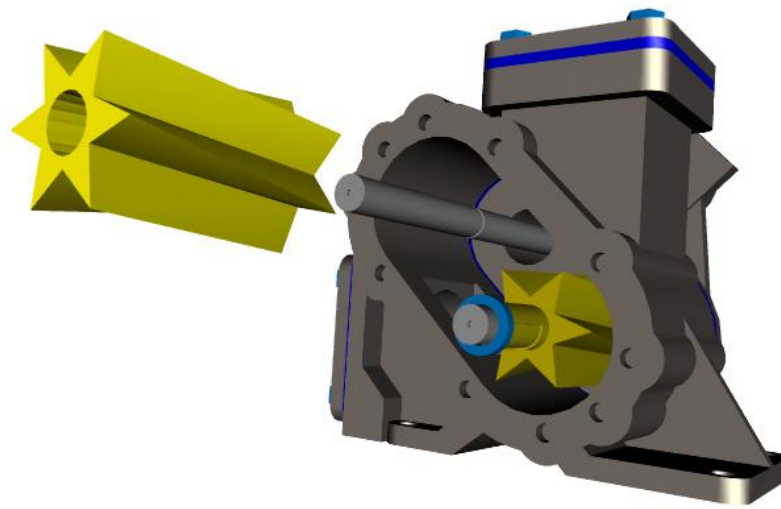


Install the Long Bushing and Expansion Washer on the Idler Shaft.

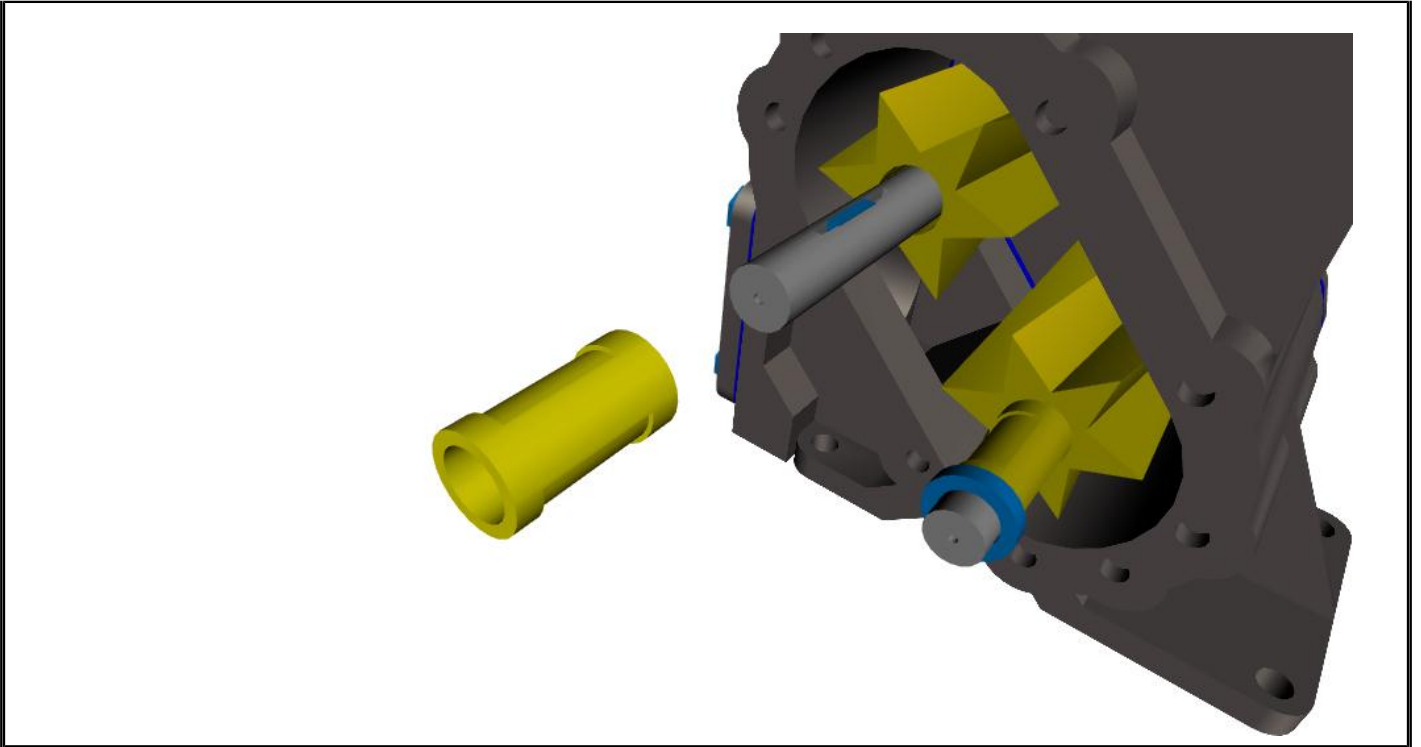
TASK 9

Task Completed	Completed By	Comments

Install the Lefthand Gear on the Drive Shaft.



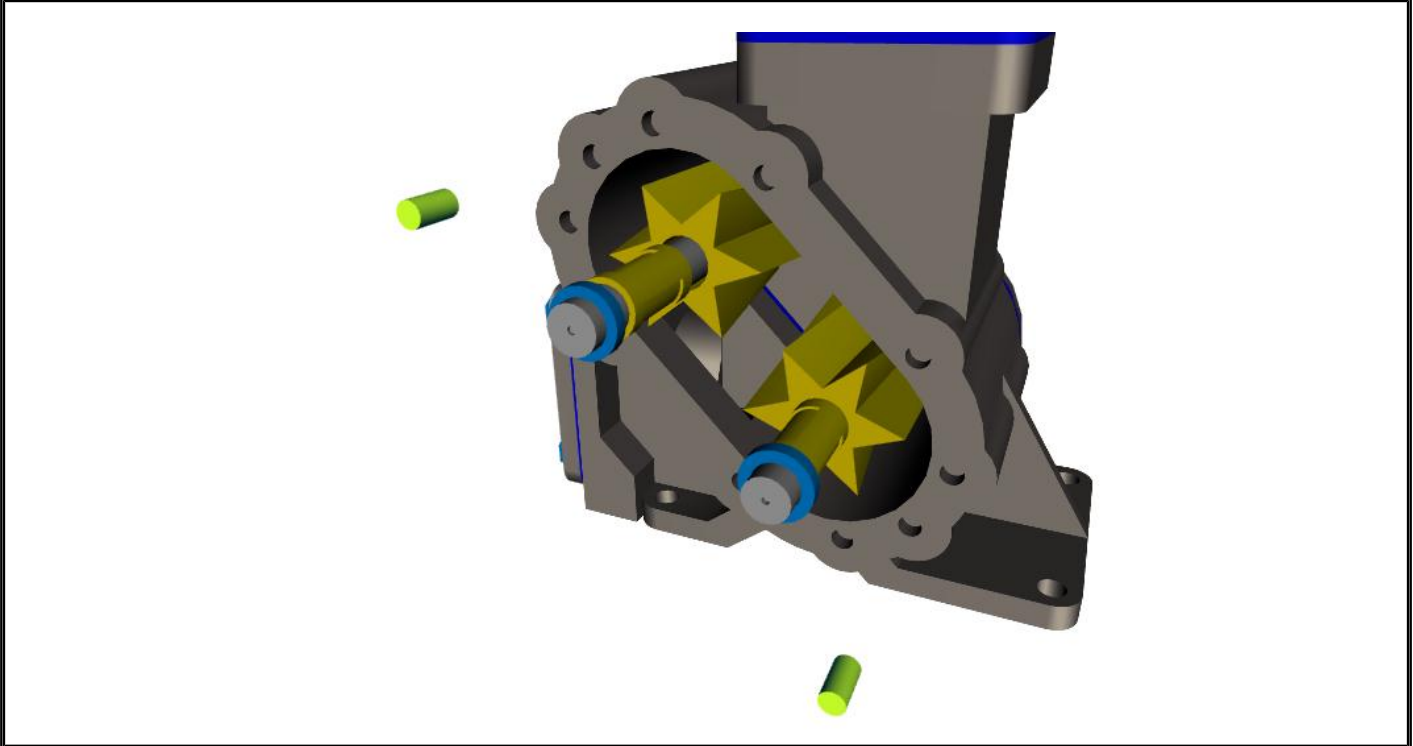
Install the Key on the Drive Shaft.



Install the Long Bushing and Expansion Washer on the Idler Shaft.

TASK 10		
Task Completed	Completed By	Comments

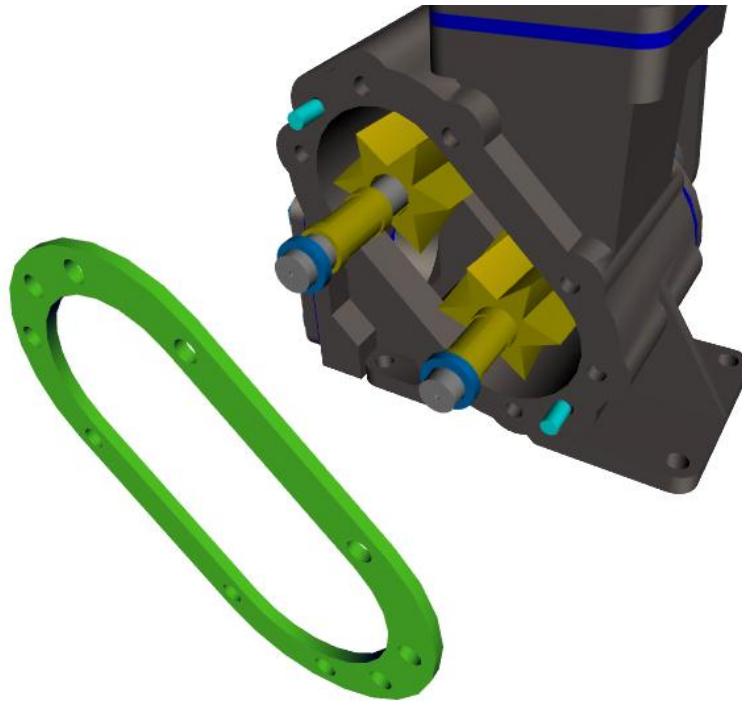
Install the Dowel Pins on the Casing.



TASK 11

Task Completed	Completed By	Comments

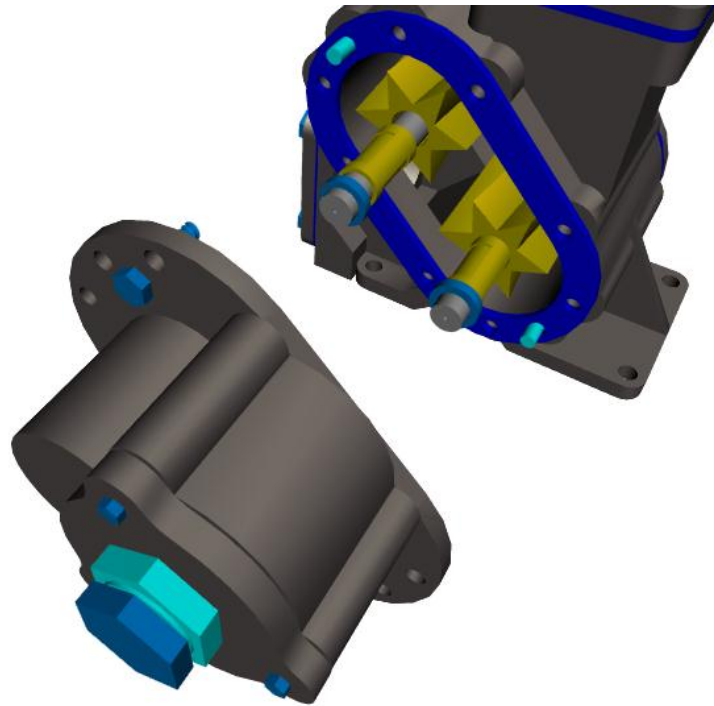
Install the Case Gasket on the Casing.



TASK 12

Task Completed	Completed By	Comments

Install the Face Plate Assembly, Relief Valve on the Casing.



Install the Bolts on the Face Plate Assembly, Relief Valve.

